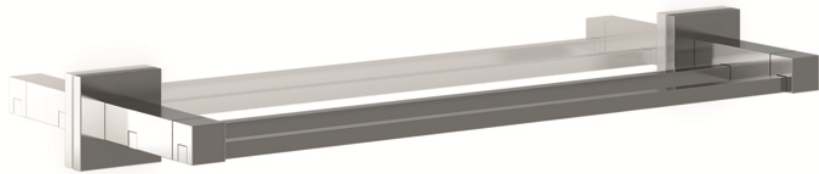


WASHROOM ACCESSORIES **GW05 19 06 02 "LUCETUM SERIES" Double towel bar**



**Product description**

Towel bar 600 mm  
Brass with chrome finish  
Finish: Polish  
Lucentum Series

---

**Technical specifications:**

Straight double bar with two support elements. The bar consists of two squared brass support tube of 10 x 10 mm and 3 mm of thickness. The ends are attached to the support elements and are made of brass. The wall plate covering the support elements, which is fastened to the fixing support, is made of cast brass. The abovementioned supports have 2 holes that are used to fix the set to the wall. The assembled set has a polished chrome finish that provides it an appropriate resistance against corrosion. The product is anchored to a brick wall by means of 4 nylon wall plugs and 4 screws. The overall dimensions of the product are 50x110x585 mm. The accessory model for the HORECA sector is GW05 19 06 02, manufactured by GENWEC WASHROOM S.L. - Av. Joan Carles I, 46-48 08908 L'Hospitalet de Llobregat.

---

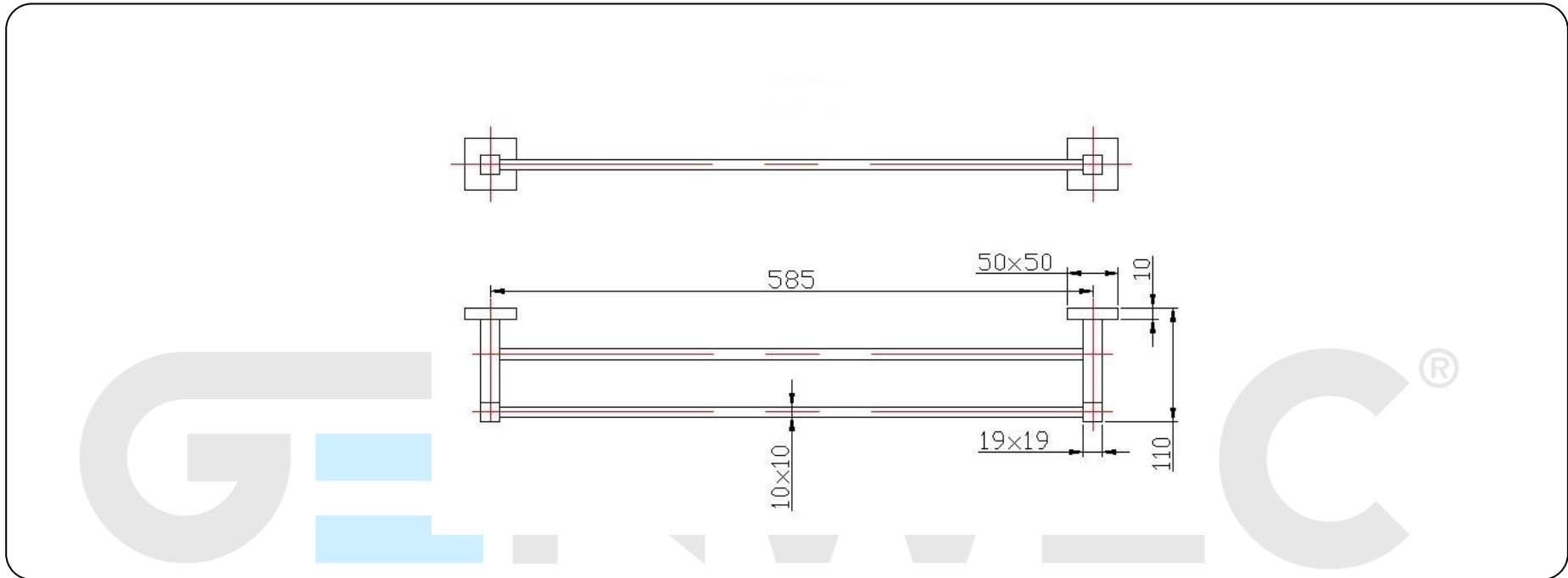
**Technical characteristics**

**Product specifications**

Bars made of brass squared tube 10 x 10  
Polished Chrome finish

**Packaging specifications**

- Type of individual package: Individual cardboard box and Cell Air wrap



**Cleaning:** A cotton cloth slightly dampened in a soapy solution is recommended. Then dry off.