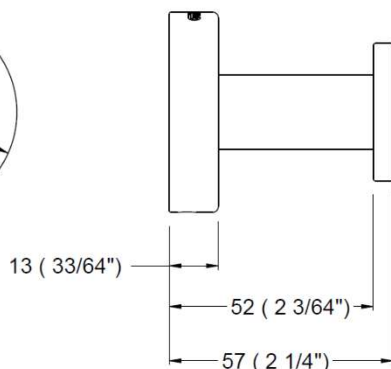
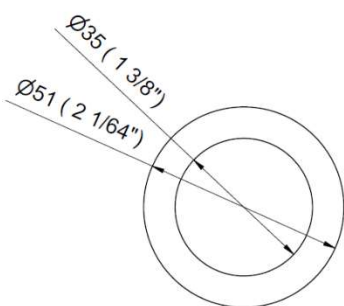


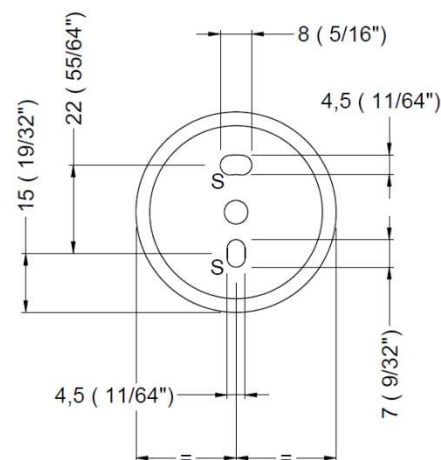


## GW05 55 04 03

### Hanger "NIMBUS series"



#### BACK VIEW WALL MOUNTING



Dimensions: ±3%

#### TECHNICAL DATASHEET

##### COMPONENTS AND MATERIALS

- Concealed wall plate – AISI 304 stainless steel. Secured to wall with two screws.
- Main body – AISI 304 stainless steel, 2,5mm thickness. Matt black powder coat (RAL 9004), 115 µm thickness. Secured to wall plate with one Allen stainless steel screw.
- Fixings set - Two Ø 6mm wall plugs, two Ø 4mm screws and one Allen key.

##### OPERATION

Suitable for hotel or residential bathrooms. No specific operation instructions.

##### MOUNTING

Loosen main body bottom set screw so wall plate can be removed. Drill two Ø 6mm holes to suit provided wall plugs (6mm) and screws (4mm) at S points indicated in technical design. Secure wall plate to the wall. Place main body and tighten set screw at the bottom so to secure with wall plate.

#### ARCHITECTURAL SPECIFICATION

Genwec hanger "Nimbus series" shall be 2,5mm thickness, AISI 304 stainless steel. Shall be RAL 9004 matt black powder coated with a thickness of 115 µm. Edges should be smooth for user safety.

#### SPARE PARTS

GW05 70 90 00 – Fixings set