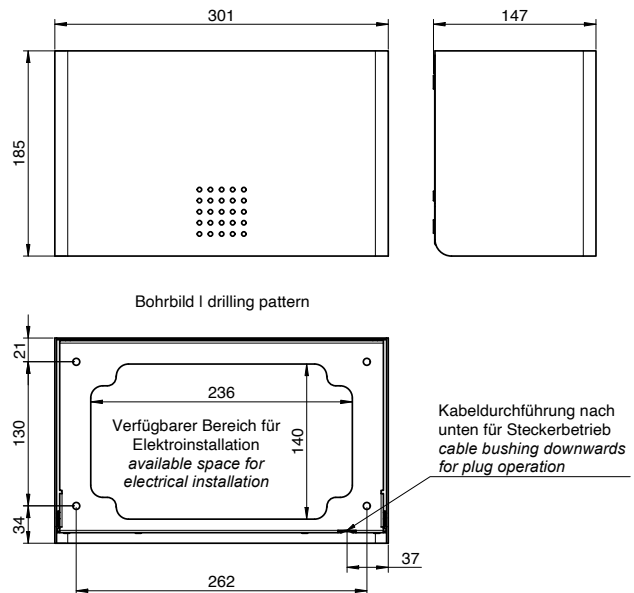
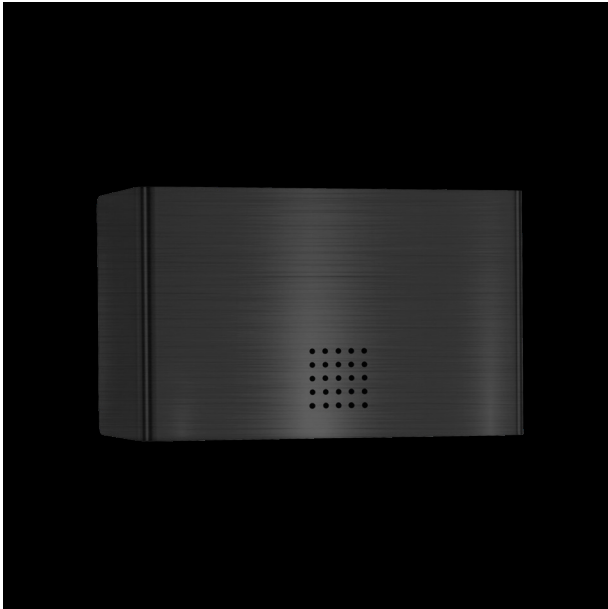


Electr. hand dryer AN-010



Electr. hand dryer, anthracite, 300mm width

Electr. hand dryer for wall mounting. Cover in Stainless steel with PVD coating in anthracite. Cover 1.5mm thickness. Perforated design area with 4mm drillings. With optoelectronic sensor. Drying time less than 10 seconds. Air temperature 45°C, 500W motor, 500W heater element, sensor detection range adjustable from 5-33cm. Volume at high speed and 1m distance max. 71,2 dB (A). Overheat protection and protected against dripping water (IPX1). Automatic switch-off mode after 60 sec. Including stainless steel screws and plugs. Incl. mains cable with EU plug. Power cable with US plug optionally available (item no.: E-017).