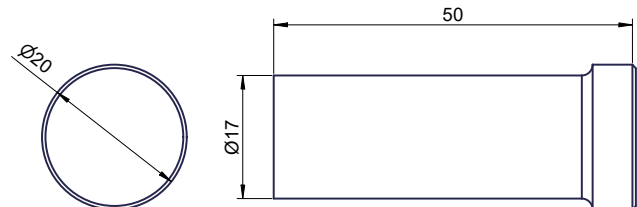
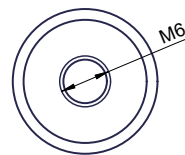


## Bag and clothes hook ME-568



Bohrbild | drilling pattern



### Bag and clothes hook, brass

Bag and clothes hook for wall mounting. Stainless steel with PVD coating in brass. The screw has a male threaded portion that mates with a threaded hole in the rear of the hook for a concealed mounting system. Can be glued with Loctite for secure fixing, if required.