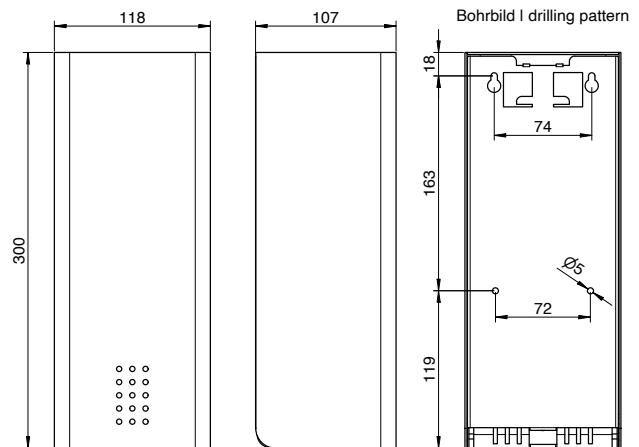
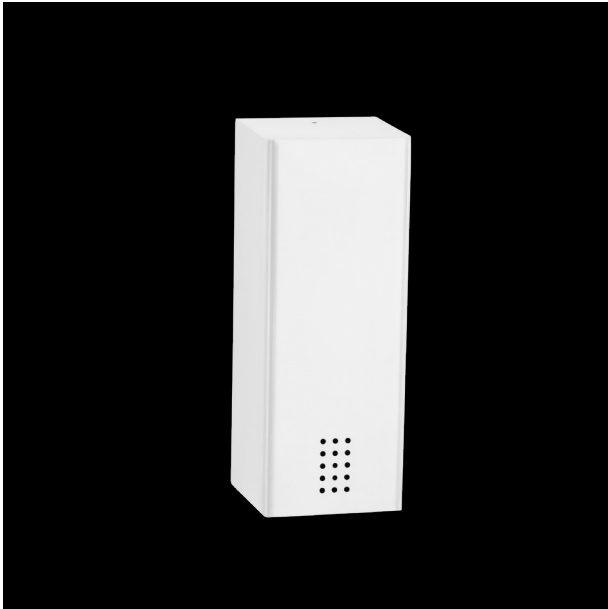


Electr. dispenser for foam soap SF-140E-FO



Electr. dispenser for foam soap, white, 0.8 l, 300mm height

Electr. dispenser for foam soap with optoelectronic sensor, for wall mounting. Stainless steel, white powder coated in RAL 9016 traffic white with fine structure. Cover 1.5mm thickness. Perforated design area with 4mm drillings. Lock not visible. Dispenser can be operated with battery (4x Alkaline 1,5V, Typ AA) or optional with direct power plug 230V. Filling bin with lid. 0.8 litres capacity. 0.8 ml per stroke. The unit can be removed for cleaning purpose. Including key, stainless steel screws and plugs.