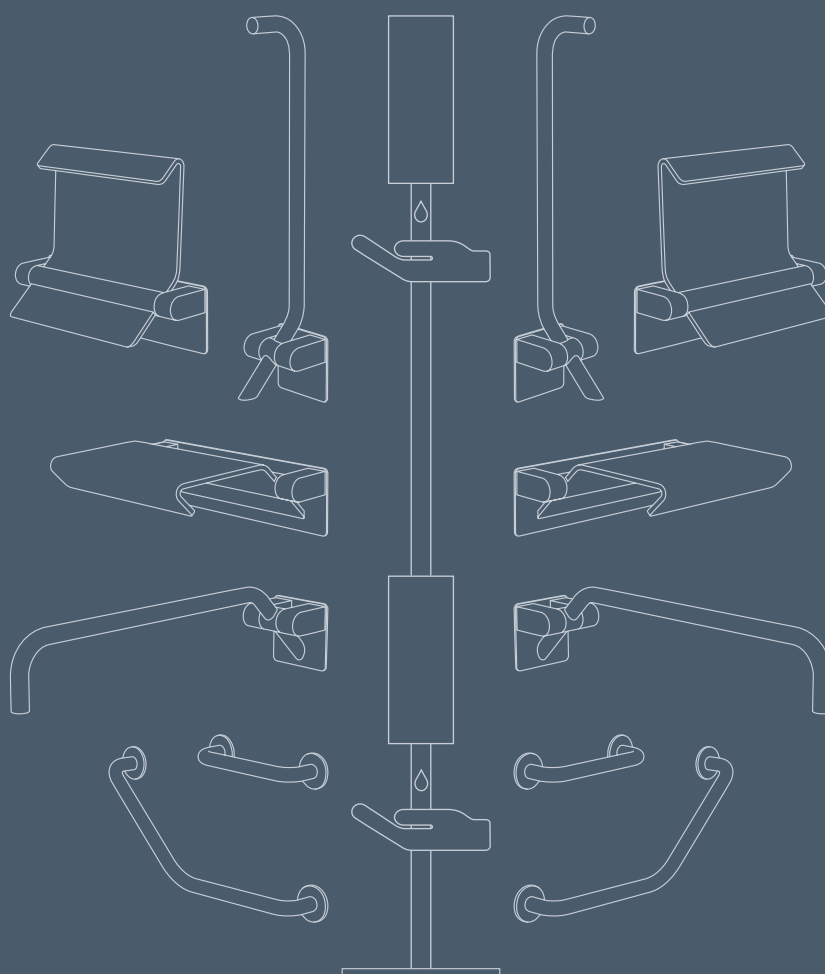


CARE COLLECTION

COMPLETING ARCHITECTURE



FROST
DENMARK



Foldable Seat and Grab Rail 2.

Wall mounted Soap & Disinfectant dispenser and Drip Bowl 2.

CARE COLLECTION

CARE Collection includes care products that blends function and aesthetics into one. The products are designed to fit toilets and bathrooms as well as entrances, staircases and waiting areas, in both private and public spaces.

Most of the products are available in the nine FROST finishes, which makes it easy to blend them into any existing interior.

CARE Collection is part of the NOVA2 series designed by Bønnelycke mdd

Please see our complete series and collections on
www.frostdenmark.com

THE NINE FROST FINISHES

FROST products are made from solid stainless steel grade AISI 304, most of them available in the nine FROST finishes. The variety of finishes makes it easy to blend the products into any existing interior.



THE NINE FROST FINISHES



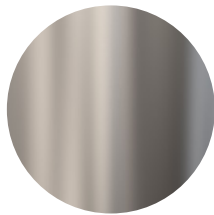
Polished Stainless



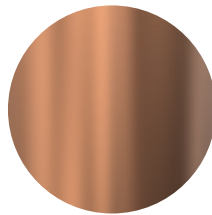
Polished Copper



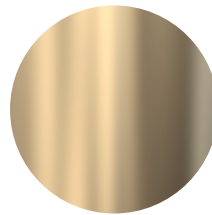
Polished Gold



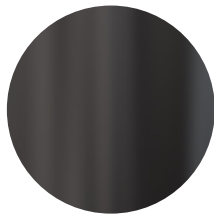
Brushed Stainless



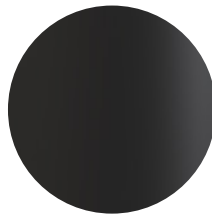
Brushed Copper



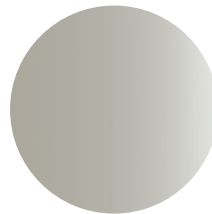
Brushed Gold



Brushed Black



Matt Black



Matt White

CONTENT

Bath Grip	p25
Cover Caps for Arm Support	p18
Drip Bowls for Soap & Disinfectant Dispenser	p29
Arm Support Foldable	p17
Seat Foldable	p14
Grab Rail Curved	p21
Grab Rail Straight	p22
Soap & Disinfectant Dispenser	p27
Stands for Soap & Disinfectant Dispenser	p30
Toilet Roll Holder for Arm Support	p18
Technical Details.....	from p34

Foldable Arm Support with and without Toilet Roll Holder 7.

Foldable Seat and Grab Rail 2.

Toilet Brush 10, Pedal Bin 550.

Bowl 90, Towel Bar 7 and Shower Wiper Long & Wide.

Pedal Bin 350, Wash Table 4074 and Oval Mirror 4146.









Right-hand page: Wall mounted Soap & Disinfectant Dispenser and Drip Bowl 2. Soap & Disinfectant Dispenser on Floor and Table Stands with Drip Bowl 1. **Left-hand page:** Arm Support with Toilet Roll Holder 7, Cover Caps on arm support back plate, Toilet Brush 10, Hygiene Waste Bin, Toilet Roll Holder 3, Toilet Roll Holder 4, Hook 8, Pedal Bin 250 and Oval Mirror 4145.





Right-hand page: Foldable Arm Support with and without Toilet Roll Holder 7, Pedal Bin 250 and Toilet Brush 10.

Left-hand page: Foldable Seat, Grab Rail 2 and Shower Wiper Long & Wide.

SEAT

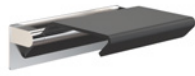
foldable

Stainless Steel / Black Aluminium

Height: 170 mm

Width: 490 mm

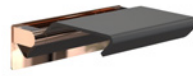
Projection: 382 mm



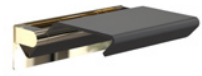
Brushed Stainless
N1963



Polished Stainless
O1963



Polished Copper
N1963-C



Polished Gold
N1963-GO



Matt Black
N1963-B



Matt White
N1963-W

The foldable CARE Seat is designed to provide support for users who struggle to stand up for longer periods of time. The seat can be used in bathrooms, kitchens, lifts, corridors and other public areas where additional seating is required.

- Wall bracket is made from high-quality concentric stainless steel
- Seat is made from 10 mm black powder coated aluminium
- No sharp edges and no visible fixings
- Maximum weight capacity is 150 kg



Grab Rail 2 and foldable Seat.
Pedal Bin 550, Bowl 90 and Towel Bar 7.



Foldable Arm Support with and without Toilet Roll Holder 7, foldable Seat and Grab Rail 2.
Toilet Brush 10, Round Mirror 4134 and Pedal Bin 550.

ARM SUPPORT

foldable

Stainless Steel

Height: 190 mm

Width: 145 mm

Projection: 784 mm

Grip: Ø32 mm



Brushed Stainless
N1961



Brushed Copper
N1961-BOC



Brushed Gold
N1961-BMG



Brushed Black
N1961-BCB



Polished Stainless
O1961



Polished Copper
N1961-C



Polished Gold
N1961-GO



Matt Black
N1961-B



Matt White
N1961-W

The foldable CARE Arm Support provides assistance to those with limited strength and mobility. It increases the safety in areas of the bathroom – such as by the wash basin, the toilet or in the shower. It provides support for standing or help in getting up. Optional and easy-to-mount additional items for the Arm Support are also available such as a Toilet Roll Holder, which is simply slid on to the Arm; Cover Caps for the backplate for when the arm is dismantled.

- Compatible with CARE Toilet Roll Holder and Cover Caps
- Made from type 304 stainless steel
- Concentric ends, no sharp edges and no visible fixings
- Maximum weight capacity is 150 kg

TOILET ROLL HOLDER 7

for arm support

Stainless Steel

Height: 128 mm

Projection: 163 mm



Brushed Stainless
N1962



Brushed Copper
N1962-BOC



Brushed Gold
N1962-BMG



Brushed Black
N1962-BCB



Polished Stainless
O1962



Polished Copper
N1962-C



Polished Gold
N1962-GO



Matt Black
N1962-B



Matt White
N1962-W

COVER CAPS

for arm support

Stainless Steel

Diameter: Ø42 mm

Projection: 42 mm



Brushed Stainless
N1961-1



Brushed Copper
N1961-1-BOC



Brushed Gold
N1961-1-BMG



Brushed Black
N1961-1-BCB



Polished Stainless
O1961-1



Polished Copper
N1961-1-C



Polished Gold
N1961-1-GO



Matt Black
N1961-1-B



Matt White
N1961-1-W



Arm Support with Toilet Roll Holder 7.
Cover Caps on arm support back plate.
Pedal Bin 250 and Toilet Brush 1.

Grab Rail 1 and Ladder.



GRAB RAIL 1

curved

Stainless Steel

Height: 324 mm

Diagonal Width: 710 mm

Projection: 96 mm

Grip: Ø32 mm

Diagonal CC: 630 mm



Brushed Stainless
N1964



Brushed Copper
N1964-BOC



Brushed Gold
N1964-BMG



Brushed Black
N1964-BCB



Polished Stainless
O1964



Polished Copper
N1964-C



Polished Gold
N1964-GO



Matt Black
N1964-B



Matt White
N1964-W

The CARE Grab Rails are designed to improve the safety and mobility of the users when performing a variety of task in bathrooms, kitchens or hallways.

- Made from type 304 stainless steel
- No sharp edges and no visible fixings
- Maximum vertically weight capacity is 350 kg
- Maximum horizontally weight capacity is 600 kg

GRAB RAIL 2

straight

Stainless Steel

Height: 80 mm

Width: 380 mm

Projection: 96 mm

Grip: Ø32 mm

CC: 300 mm



Brushed Stainless
N1965



Brushed Copper
N1965-BOC



Brushed Gold
N1965-BMG



Brushed Black
N1965-BCB



Polished Stainless
O1965



Polished Copper
N1965-C



Polished Gold
N1965-GO



Matt Black
N1965-B



Matt White
N1965-W

The CARE Grab Rails are designed to improve the safety and mobility of the users when performing a variety of task in bathrooms, kitchens or hallways.

- Made from type 304 stainless steel
- No sharp edges and no visible fixings
- Maximum vertically weight capacity is 350 kg
- Maximum horizontally weight capacity is 600 kg



Grab Rail 2 and Toilet Brush & Roll Holder.

Bath Grip, Soap Dispenser 1, Towel Bar 11 and Pedal Bin 350.
Round Mirror 4140 with built-in magnifying mirror,
Oval Mirror 4139 and Square Mirror 4143.



BATH GRIP

300 mm

Stainless Steel

Height: 28 mm

Width: 328 mm

Projection: 62 mm

Grip: Ø16 mm

CC: 300 mm



Brushed Stainless
N1934



Polished Stainless
01934

Wall mounted Soap & Disinfectant Dispenser and Drip Bowl 2.
Round Mirror 4131.



SOAP & DISINFECTANT DISPENSER

wall / stands, touch free,
lock, 500 ml

Stainless Steel

Height: 217 mm

Diameter: Ø89 mm

Projection: 112 mm

CC: 114 mm



Brushed
Stainless
N1978



Brushed
Copper
N1978-BOC



Brushed
Gold
N1978-BMG



Brushed
Black
N1978-BCB



Polished
Stainless
N1978



Polished
Copper
N1978-C



Polished
Gold
N1978-GO



Matt
Black
N1978-B



Matt
White
N1978-W



reddot winner 2021



Wall mounted Soap & Disinfectant Dispenser and Drip Bowl 2.
Soap & Disinfectant Dispenser on Floor Stand with Drip Bowl 1.

DRIP BOWL 1

stands

Stainless Steel

Height: 25 mm

Width: 89 mm

Projection: 170 mm



DRIP BOWL 2

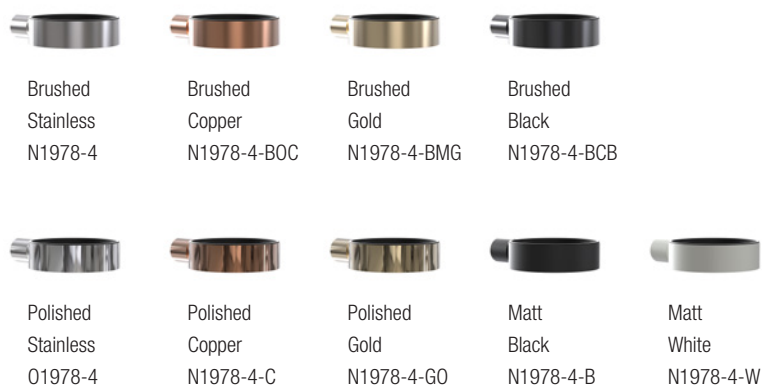
wall

Stainless Steel

Height: 25 mm

Width: 89 mm

Projection: 128 mm



reddot winner 2021

TABLE STAND

for soap & disinfectant dispenser

Stainless Steel

Height: 500 mm

Diameter: Ø32 / Ø180 mm

Projection: 180 mm

With the included mounting accessories the stands are easy to assemble and the dispenser is as easily fixed to the stands.

To ensure stability base and tube are made from solid AISI 304 grade stainless steel.



Brushed
Stainless
N1978-1



Matt
Black
N1978-1-B



Matt
White
N1978-1-W

FLOOR STAND

for soap & disinfectant dispenser

Stainless Steel

Height: 1200 mm

Diameter: Ø32 / Ø250 mm

Projection: 250 mm

With the included mounting accessories the stands are easy to assemble and the dispenser is as easily fixed to the stands.

To ensure stability base and tube are made from solid AISI 304 grade stainless steel.



Brushed
Stainless
N1978-2



Brushed
Gold
N1978-2-BMG



Matt
Black
N1978-2-B




Matt
White
N1978-2-W



reddot winner 2021



Soap & Disinfectant Dispenser on Table Stand and on Floor Stand, both with Drip Bowl 1.
Bench 6303, Rectangular Mirror 4137 and Square Mirror 4143.



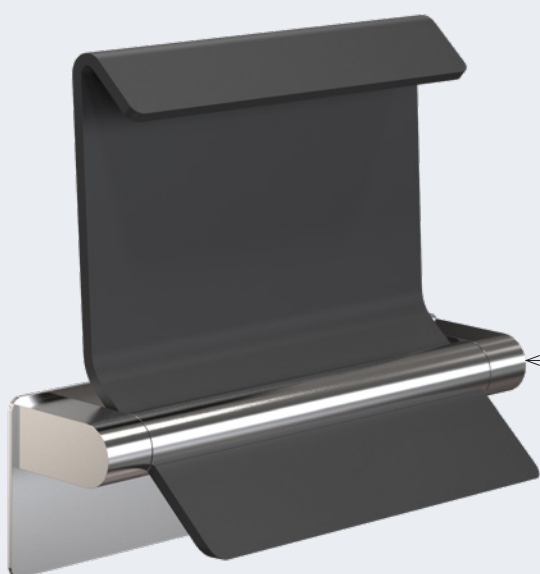
Arm Support with and without Toilet Roll Holder 7.
Wall mounted Soap & Disinfectant Dispenser.
Soap & Disinfectant Dispenser on Floor Stand with Drip Bowl 1.
Towel Bar 11, Towel Bar 3, Bench 6304 and Pedal Bin 250.
Makeup Wall Mirror with 5x magnification, Rectangular Mirror 4137,
Rectangular Mirror 4135 and Square Mirror 4143.



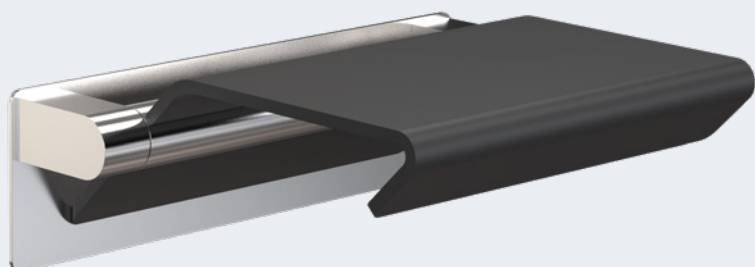
SEAT - TECHNICAL DETAILS

The foldable CARE Seat is designed to provide support for users who struggle to stand up for longer periods of time. The seat can be used in bathrooms, kitchens, lifts, corridors and other public areas where additional seating is required.

- Wall bracket is made from high-quality concentric stainless steel
- Seat is made from 10 mm black powder coated aluminium
- No sharp edges and no visible fixings
- Maximum weight capacity is 150 kg

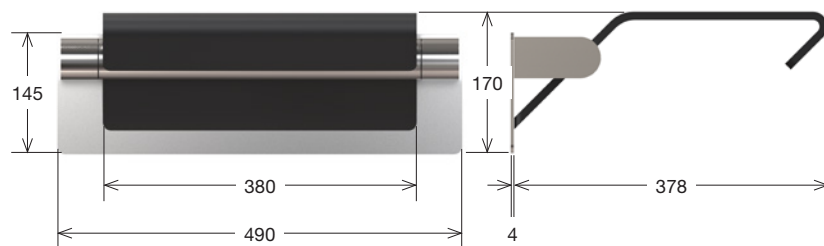


Available in six FROST finishes

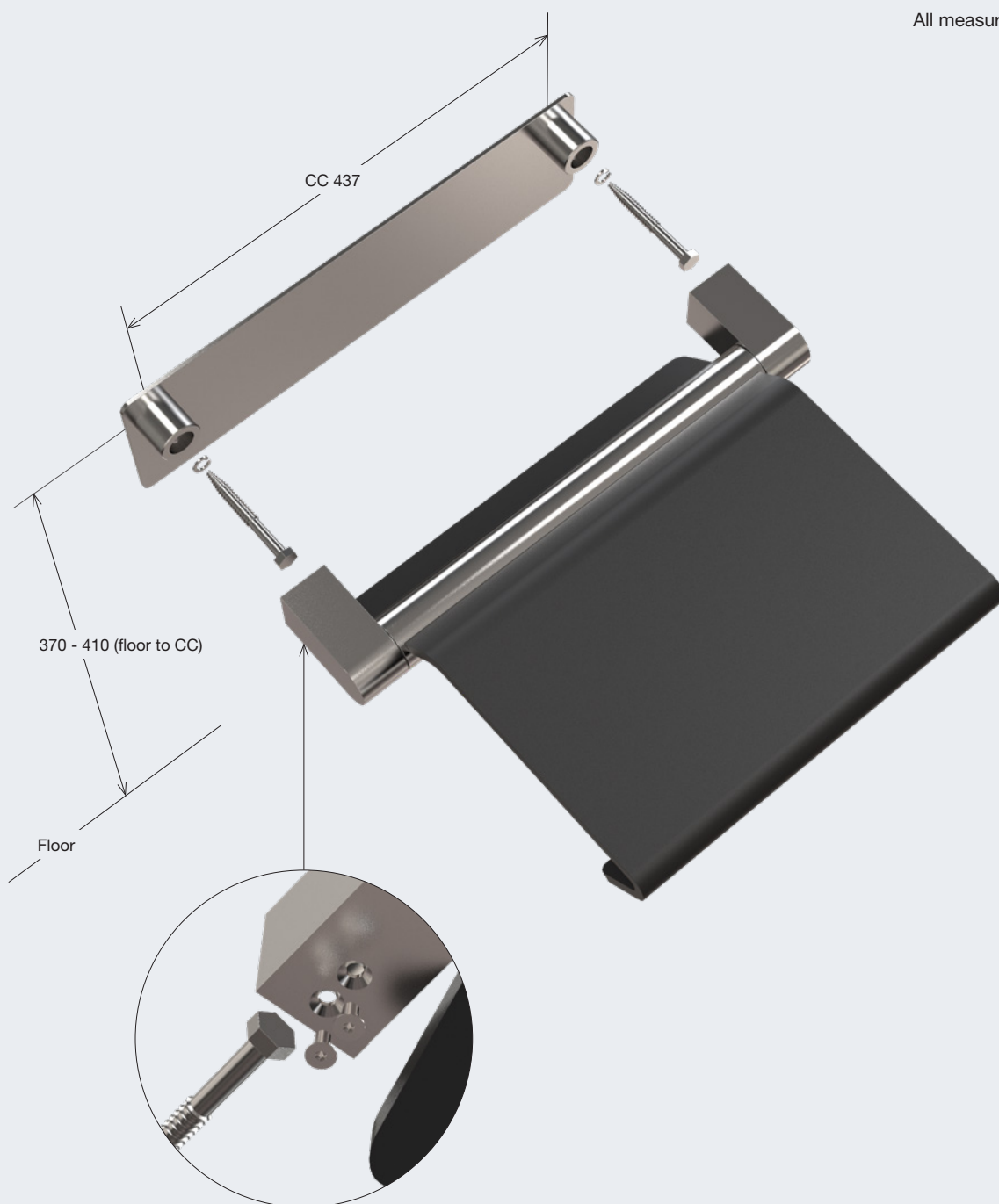


Black powder coated aluminium

DIMENSIONS
All measurements in mm



MOUNTING
All measurements in mm



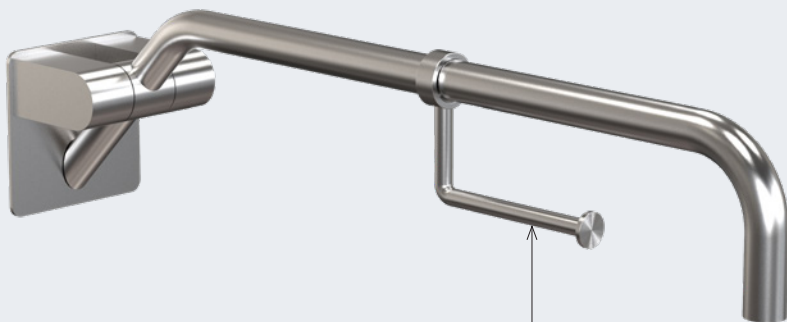
ARM SUPPORT - TECHNICAL DETAILS

The foldable CARE Arm Support provides assistance to those with limited strength and mobility. It increases the safety in areas of the bathroom – such as by the wash basin, the toilet or in the shower. It provides support for standing or help in getting up. Optional and easy-to-mount additional items for the Arm Support are also available such as a Toilet Roll Holder, which is simply slid on to the Arm; Cover Caps for the backplate for when the arm is dismantled.

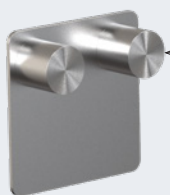
- Compatible with CARE Toilet Roll Holder and Cover Caps
- Made from type 304 stainless steel
- Concentric ends, no sharp edges and no visible fixings
- Maximum weight capacity is 150 kg



Available in all nine FROST finishes



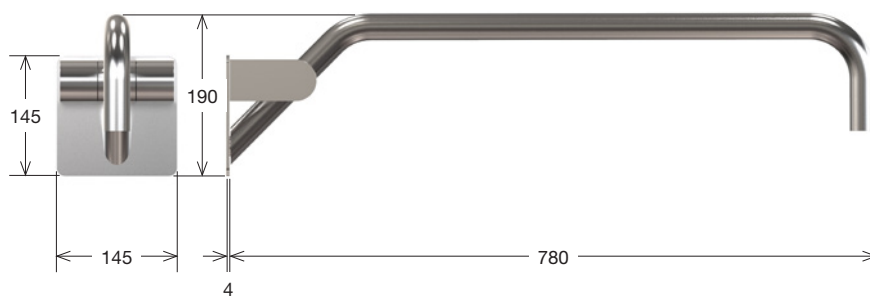
Optional Toilet Roll Holder which is simply slid on to the arm
Available in all nine FROST finishes



Optional Cover Caps for the backplate when the arm is dismantled
Available in all nine FROST finishes

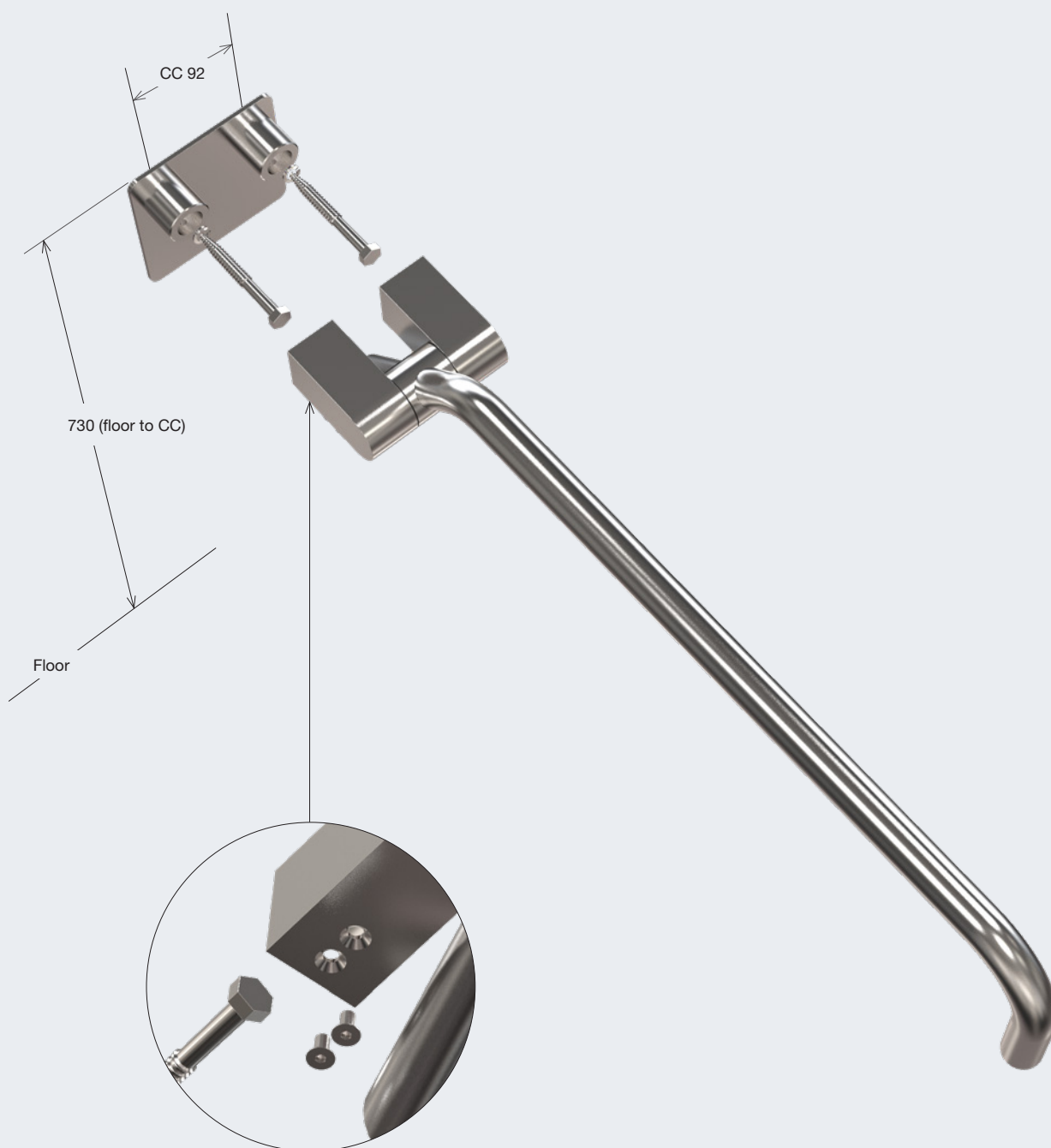
DIMENSIONS

All measurements in mm



MOUNTING

All measurements in mm



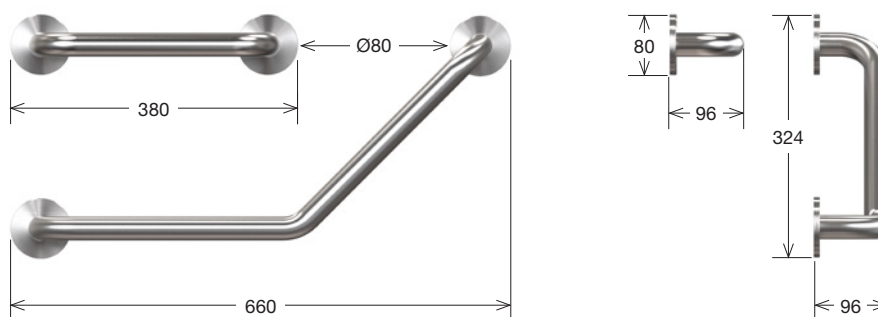
GRAB RAILS - TECHNICAL DETAILS

The CARE Grab Rails are designed to improve the safety and mobility of the users when performing a variety of task in bathrooms, kitchens or hallways.

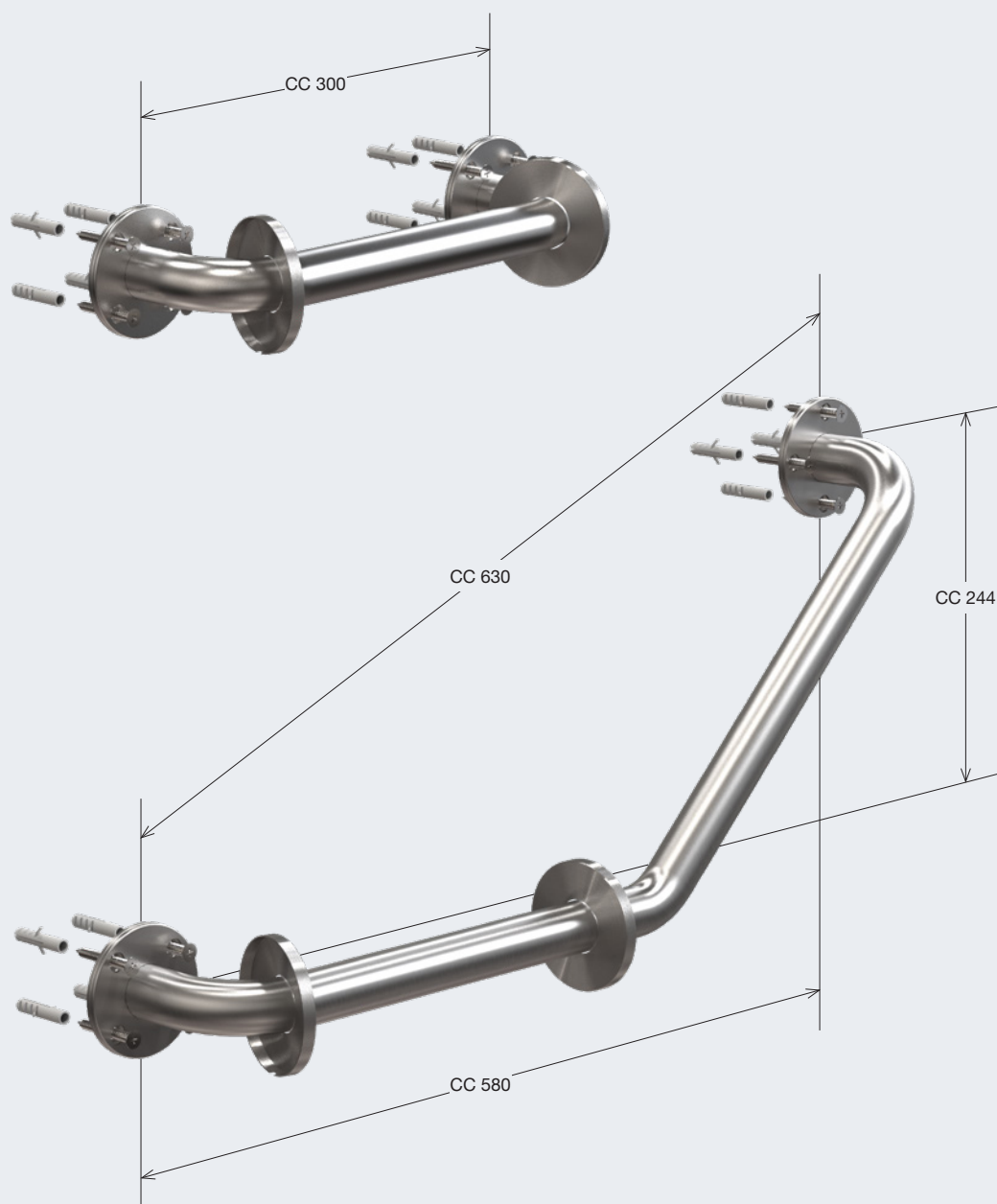
- Made from type 304 stainless steel
- No sharp edges and no visible fixings
- Maximum vertically weight capacity is 350 kg
- Maximum horizontally weight capacity is 600 kg



DIMENSIONS All measurements in mm



MOUNTING All measurements in mm





METHOD OF TESTING

To ensure that the CARE Collection is capable of withstanding heavy loads and conditions of every day use, the products have been tested in accordance to the requirements of the European standard for technical aids for disabled, BS/EN 12182:2012. We recommend all care products are installed on a solid wall. Reinforcement should always be used if the wall is not stable.

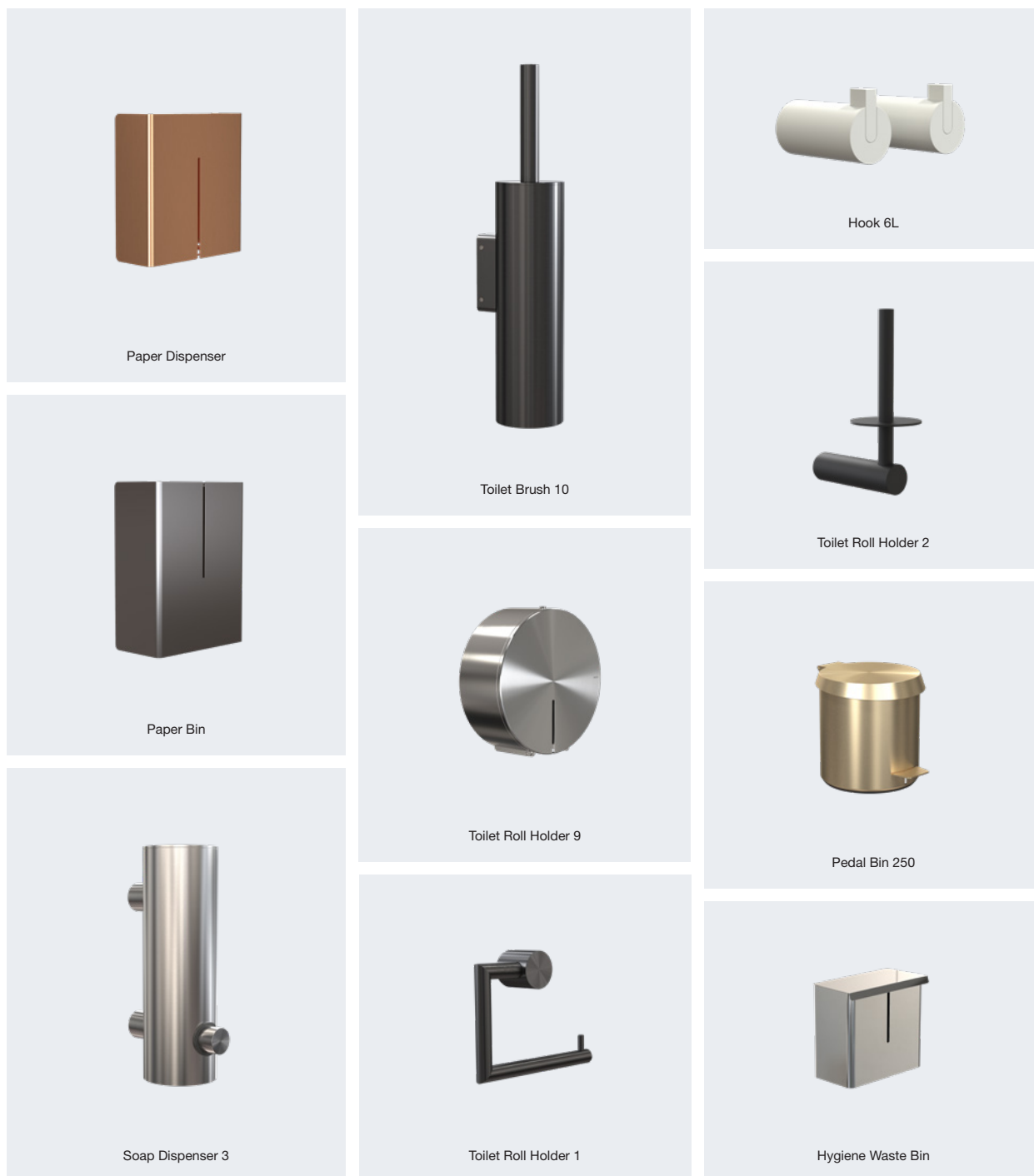
All tests are carried out on products mounted on a solid, concrete wall, thus we cannot guarantee the same performance and durability if this is not observed. For safety reasons, we recommend to check all bolt connections to ensure that no parts are loose and that all attachments to the wall are intact.

SEAT AND ARM SUPPORT

Implementing a safety factor of 1.5 the sample was subjected to a static proof load test with 150 kg, followed by a static overload test with 225 kg. The sample withstood the static proof load and the static overload test without fracture or collapse.

GRAB RAILS

Implementing a safety factor of 1.5 the sample was subjected to a static load; vertical load 3.43 kN (350 kg) followed by a horizontal load of 5.89 kN (600 kg). The sample withstood both the vertical and horizontal load without fracture or collapse.



ADDITIONAL NOVA2 PRODUCTS

A selection of additional products from The NOVA2 series designed by Bønnelycke mdd, who, with a refined sense of simplicity, technical details and stylish fit, has managed to combine aesthetics and function in one and created a range of quality products that will adorn any room - private or public.

Please see our complete series and collections on
www.frostdenmark.com

Foldable Seat and Shoe Shelf 1.



Copyright © 2022. All rights reserved.

No part of this publication may be reproduced or transmitted in any form or by any means, electronic or mechanical, including photocopy, recording or any other information storage and retrieval system, without prior permission from FROST A/S.

We reserve the right to make alterations to the models without prior notice.

Graphic design and 3D rendering: Bønnelycke mdd

Please see our complete series and collections on
www.frostdenmark.com

FROST A/S

Headquarter & Showroom

Bavne Allé 32
8370 Hadsten
Denmark
+45 8761 0032
info@frost.dk

Flagship Showroom

Christian IX's Gade 5
1111 Copenhagen
Denmark
+45 5172 6432
showroom-cph@frost.dk

www.frostdenmark.com

We are also to be found as frostdenmark on Facebook,
Instagram, Pinterest and LinkedIn

